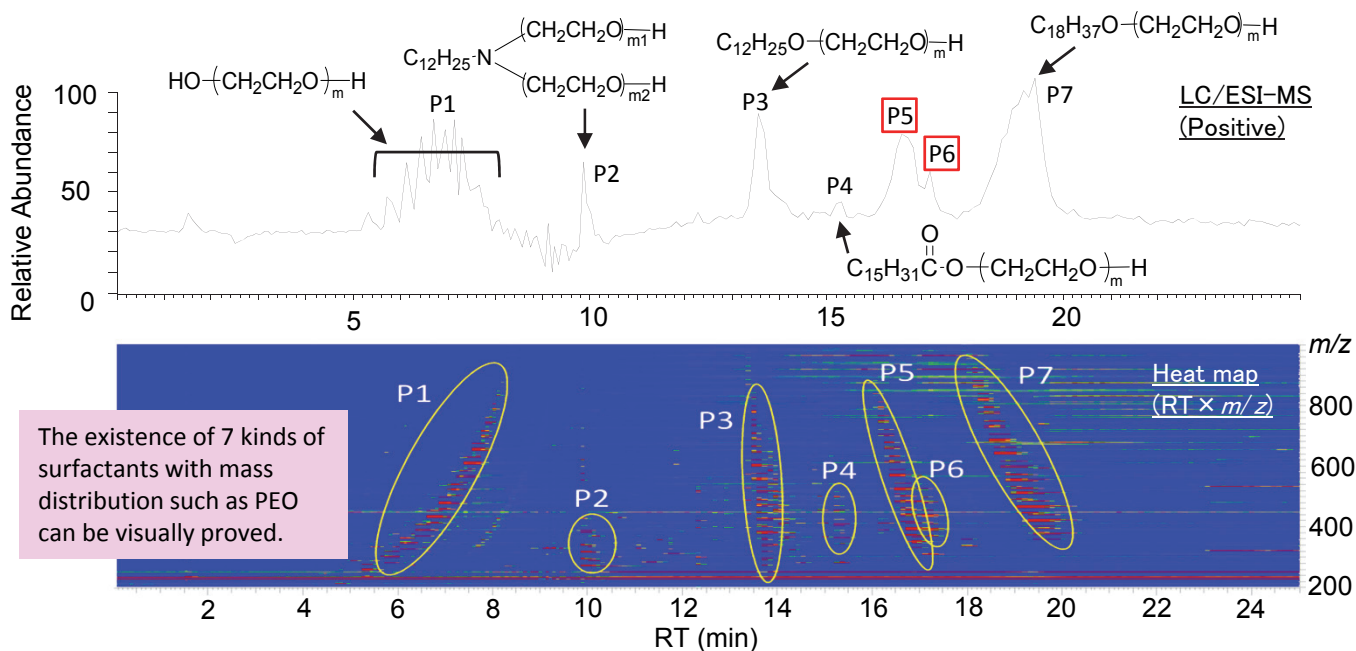


Efficient Analysis of Surfactant Mixtures based on LC/MS 2D Chromatogram

Structural identification of surfactants, which are used in various materials field, is importance because those give the functionality to materials even in a small amount. Using high resolution LC/MS (2D chromatogram), we introduce the approach to analyze the structure of surfactants.

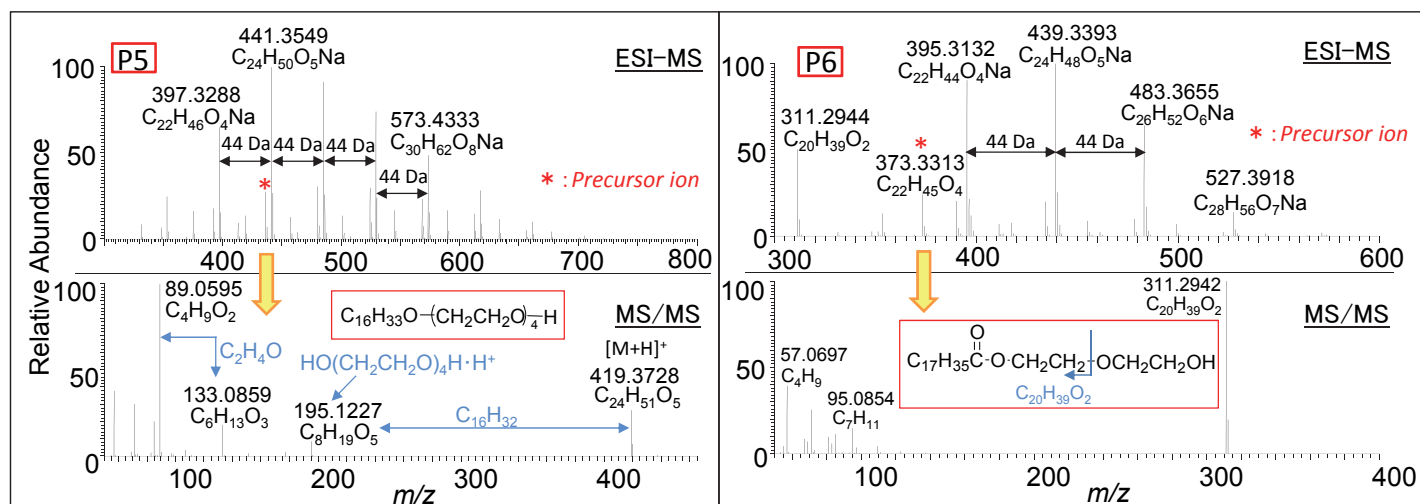
LC/MS 2D Chromatogram

2D heat map (RT × m/z) shows the mass distribution, which is useful for the analysis of non-ionic surfactant mixtures.



Accurate mass analysis (MS/MS analysis)

Composition formula is calculated by accurate mass analysis. MS/MS analysis makes it possible to estimate the detailed structure.



Analyses of 2D chromatogram and MS/MS spectrum, which are obtained by high resolution LC/MS measurement, enable to identify the detailed structure of surfactants.